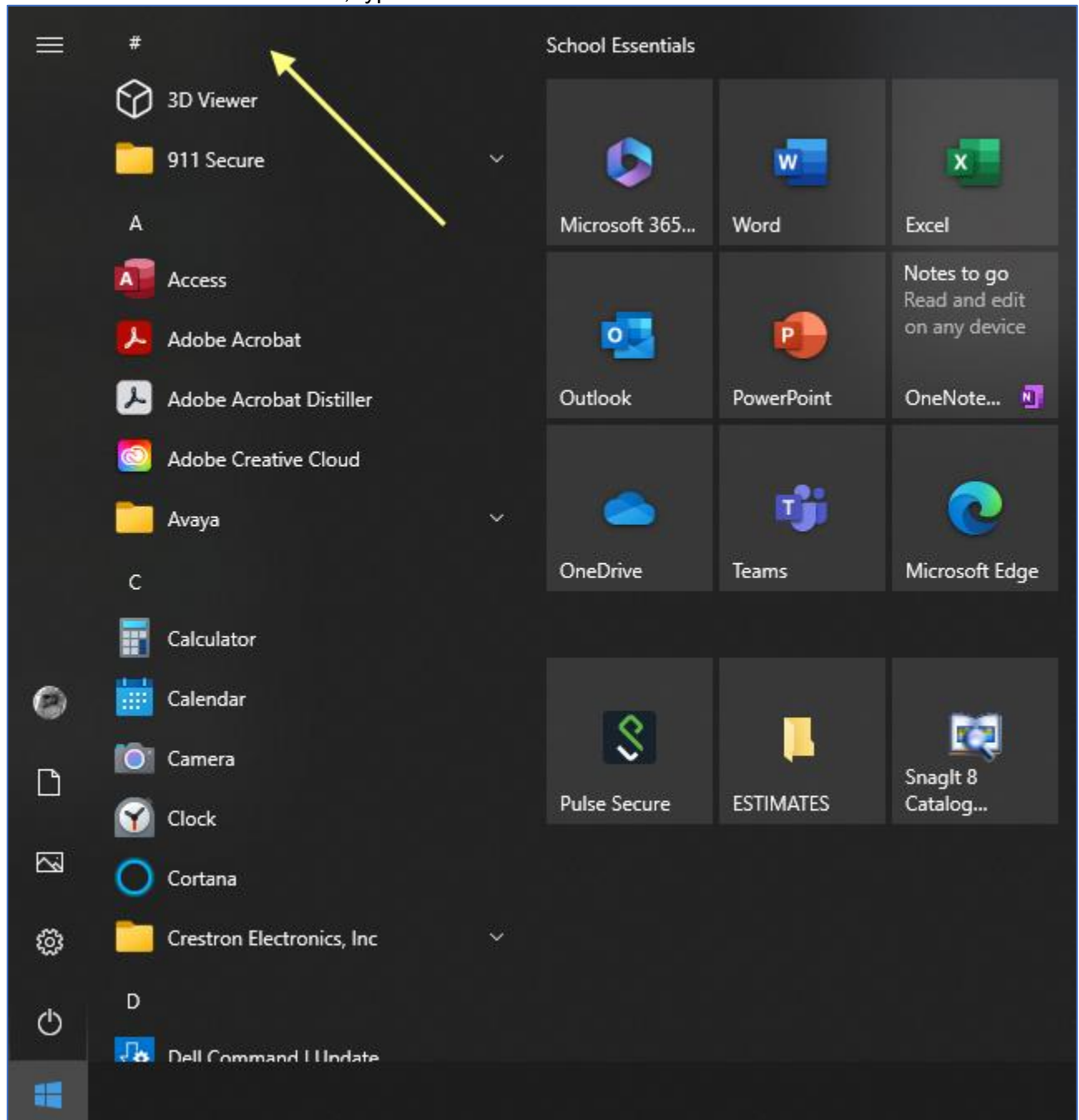


## How to install SENTRY Gatekeeper

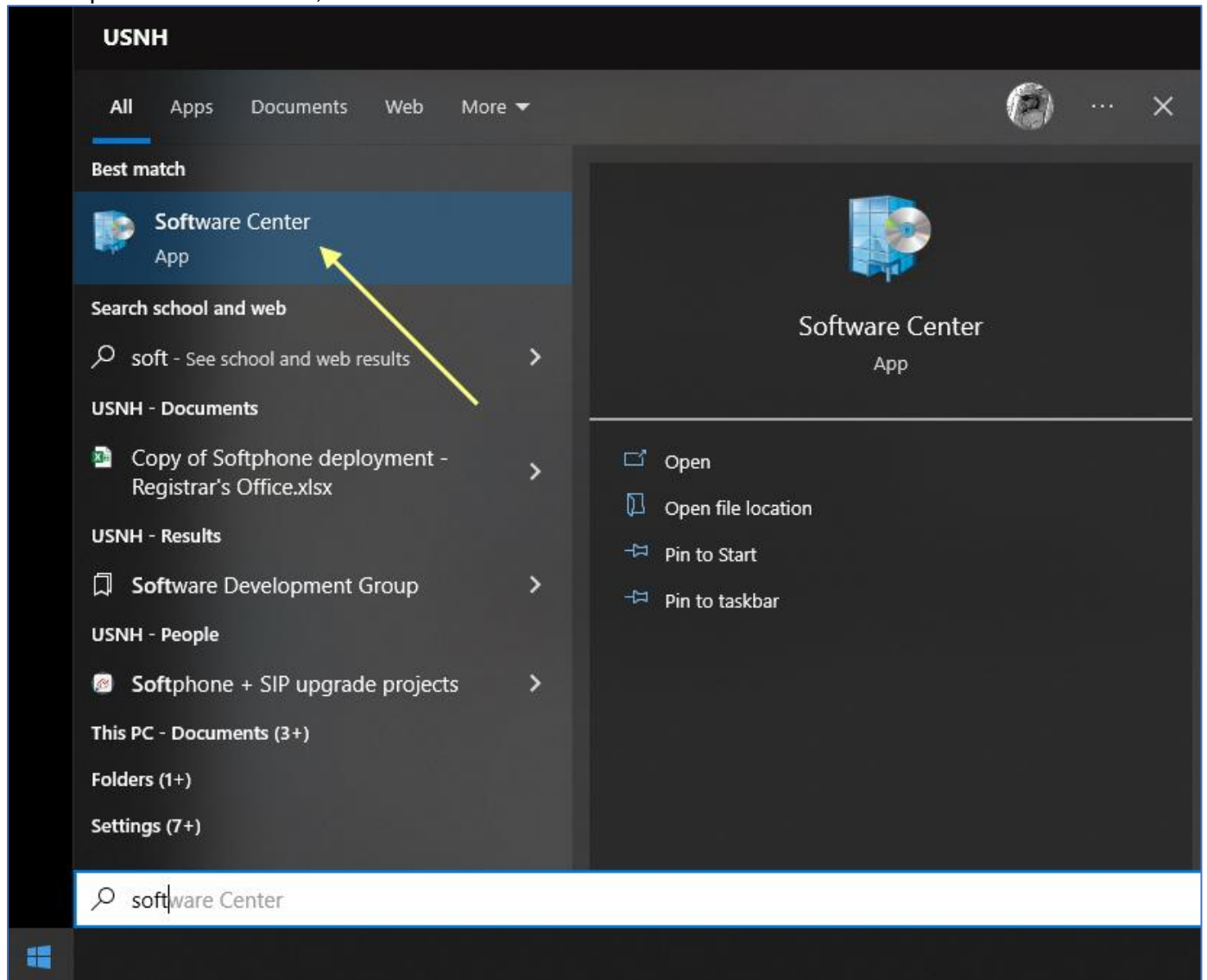
1. In the left lower corner on your desktop, select the "Start menu" -icon.



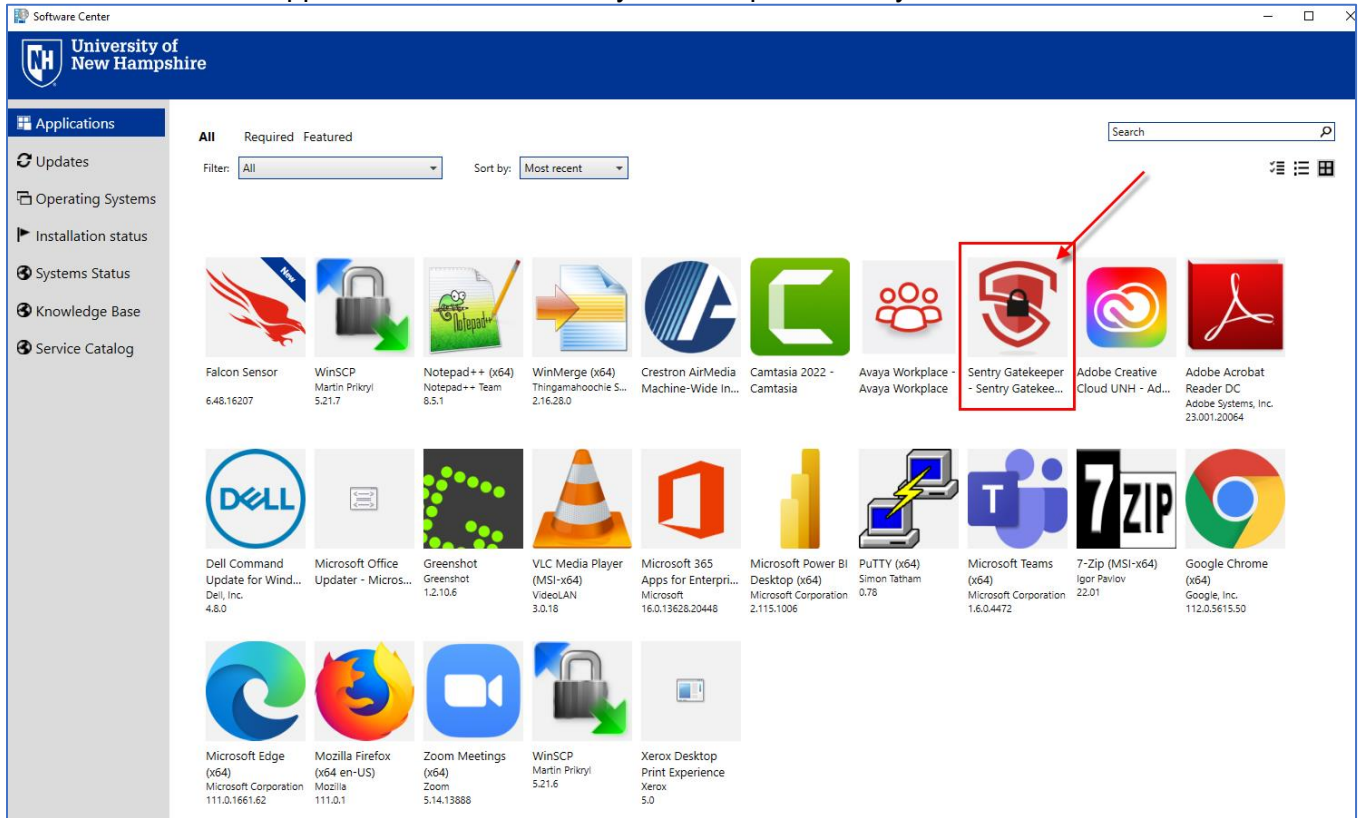
2. In the “Start menu search area”, type “software”.



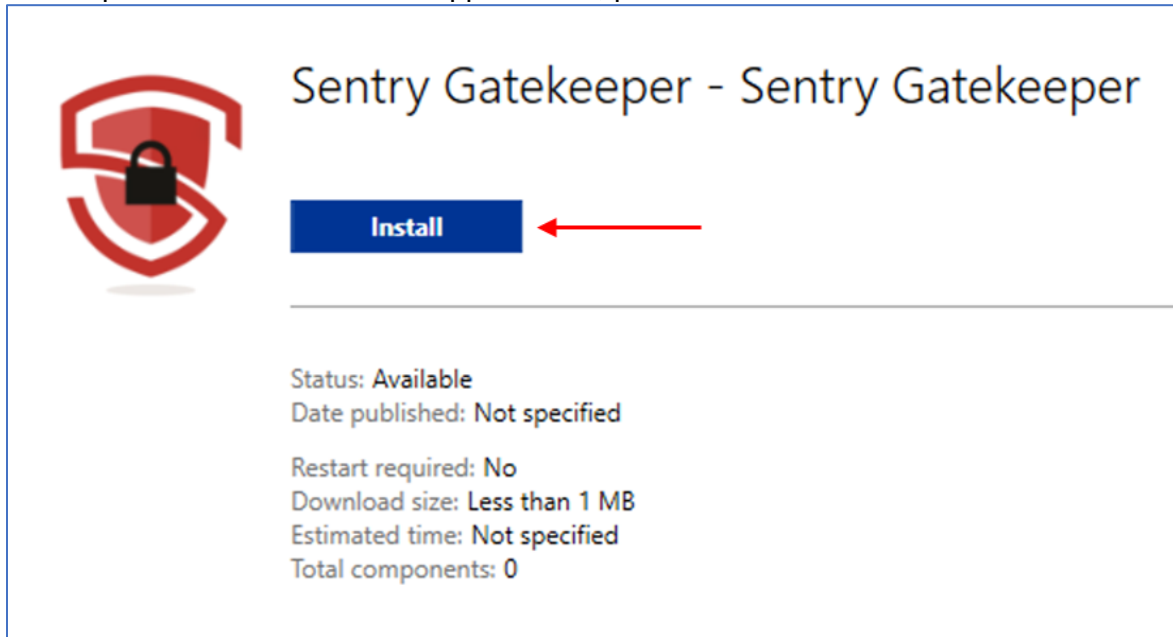
3. In the updated “Start Menu”, select “Software Center”.



4. In “Software Center Applications”, select “Sentry Gatekeeper – Sentry Gatekee...”.



5. In the updated “Software Center Applications”, press the “Install” button.



6. Follow the prompts.